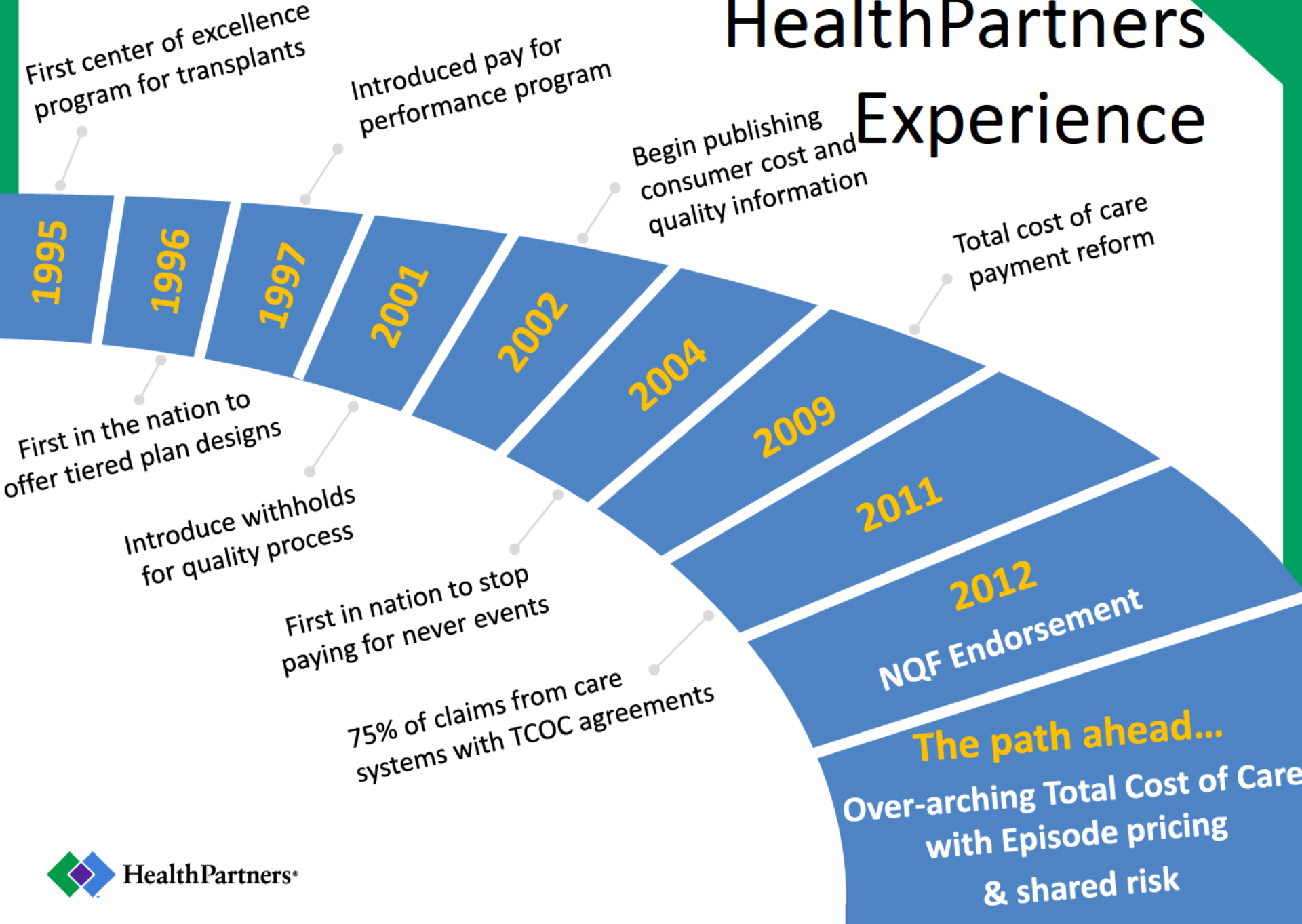


Examining Health Care Competition



**TRANSPARENCY:
QUALITY AND COST**

HealthPartners Experience



High Impact Measures



WHAT IS TOTAL COST OF CARE?

- **Population-based model**
- **Attributable** to medical groups for **accountability**
- Includes **all care, treatment costs**, places of service, and provider types
- Measures **overall performance relative to other groups**
- **Illness-burden adjusted**
- **Drillable** to condition, procedure and service level
- Identifies **price differences and utilization drivers**
- National Quality Forum-endorsed

UPTAKE ACROSS THE COUNTRY

