

Comments on “The Accuracy of Hospital Merger Screening Methods”

Sean May

October 17, 2014

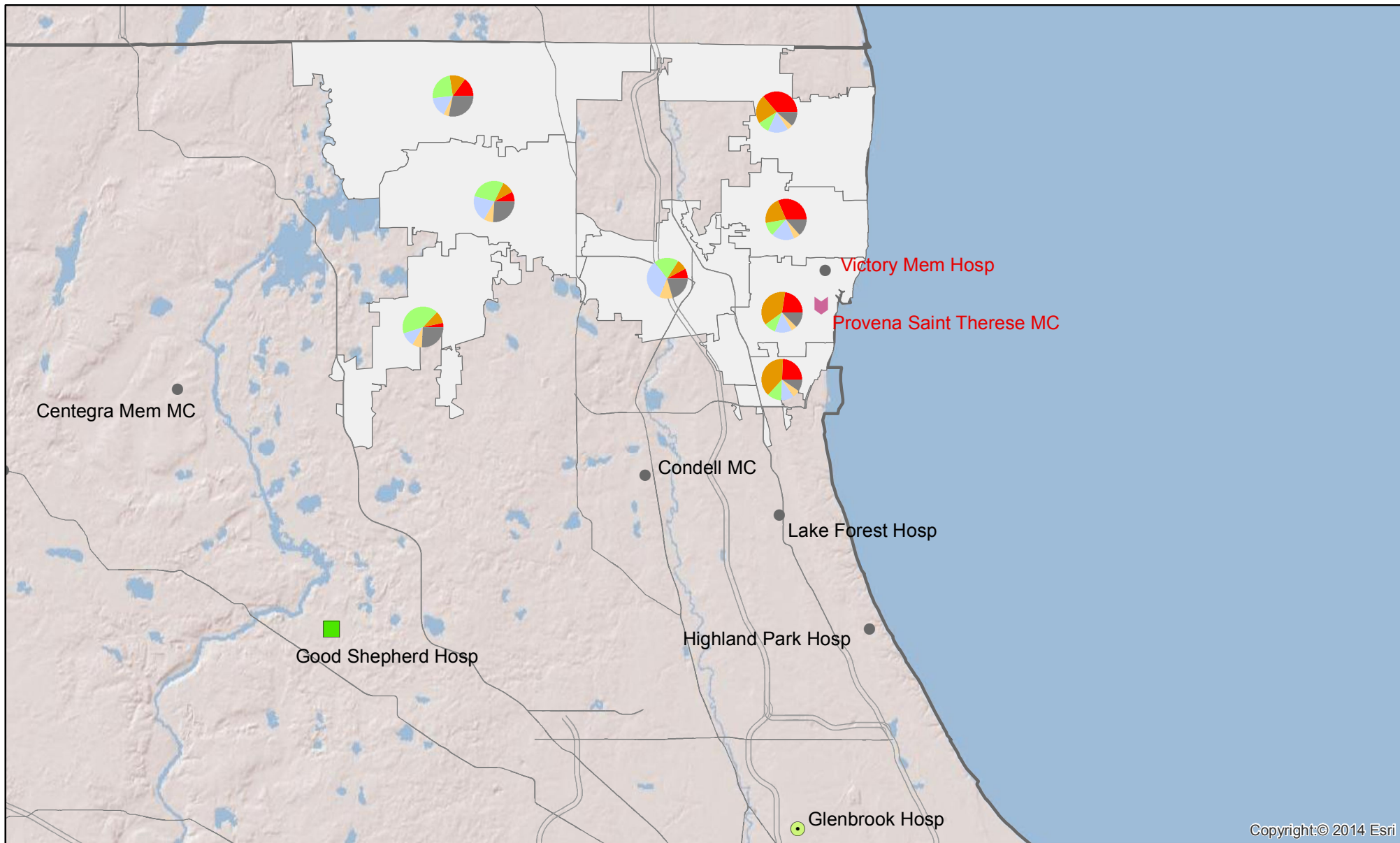
CRA Charles River
Associates

Agenda

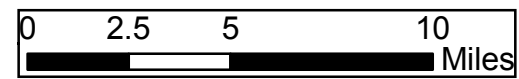
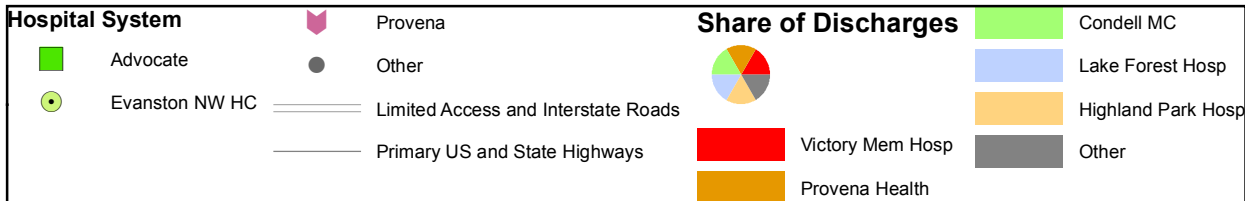
- How well can any hospital merger screening method do?
- How reliable are the hospital price data used to calculate the actual post-merger price changes?

Victory Memorial Hospital and Provena Health

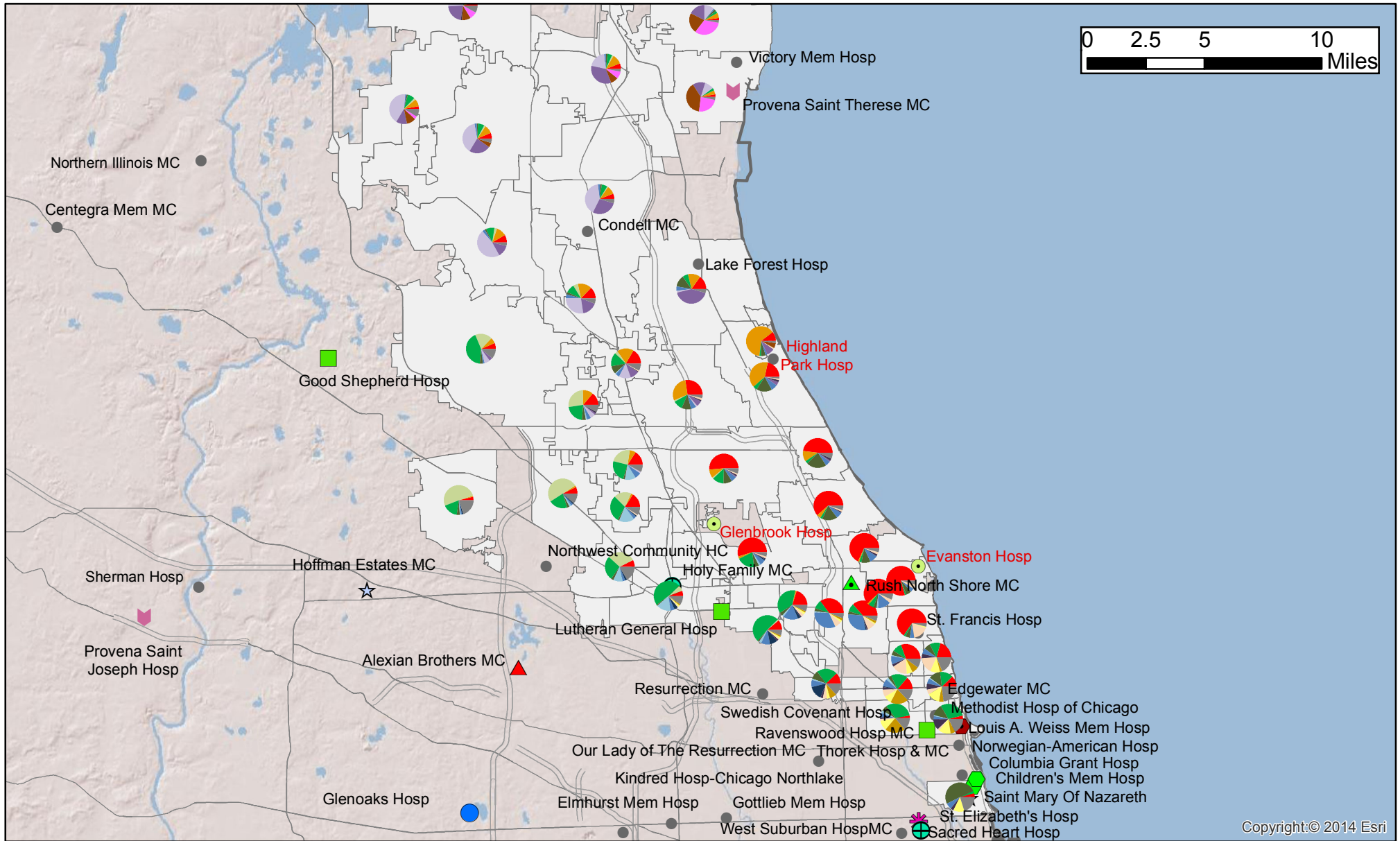
Share of Discharges for ZIP Codes in the 80% Service Area



Copyright:© 2014 Esri



Evanston Northwestern Healthcare and Highland Park Hospital Share of Discharges for ZIP Codes in the 80% Service Area



Copyright:© 2014 Esri

Hospital System		Share of Discharges	
Adventist Health	Catholic Health Partners	Advocate	Condell MC
Advocate	Columbia/HCA	NW Mem Hosp	Lake Forest Hosp
Alexian Brothers Health Sys	Evanston NW HC	Sisters of the Holy Family	U of Chicago
Ancilla	Provena	Evanston NW HC	St. Francis Hosp
	Rush-Presbyterian	Highland Park Hosp	Illinois Masonic MC
	Sisters of the Holy Family	NW Comm HC	
	University of Chicago Health System		
	Other		
Limited Access and Interstate Roads		Resurrection MC	
Primary US and State Highways			
		Provena Health	
		Swedish Covenant Hosp	
		Victory Mem Hosp	
		Other	

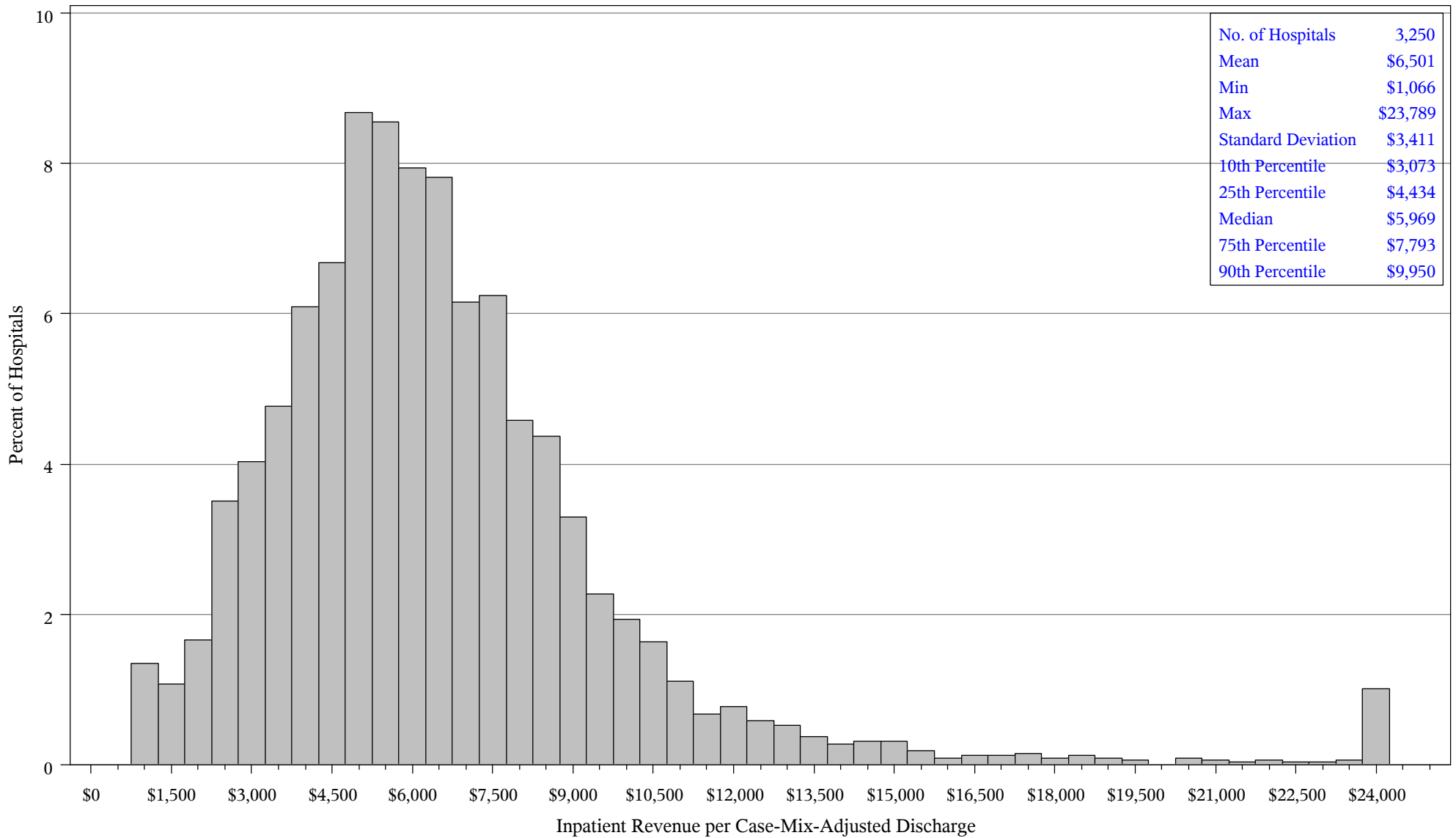
Hospital Mergers on the North Shore of Chicago

	ENH/Highland Park	St. Therese/Victory Memorial
Increase in WTP	3%	24%
Diversion from A → B	4%	30%
Diversion from B → A	14%	39%
Actual price increases		
<i>Payer A</i>	21 to 26%***	4 to 7%
<i>Payer B</i>	17 to 25%***	-21 to -13%***
<i>Payer C</i>	-1 to 0%	-8 to -6%***
<i>Payer D</i>	56 to 65%***	17 to 22%***
<i>Payer E</i>	11 to 16%***	-22 to -18%***

Sources: May (2013); Haas-Wilson and Garmon (2011), Tables 2 and 3. Significance level: ***1%.

Histogram of STAC Hospital Prices (Inpatient Revenue per Case-Mix-Adjusted Discharge)

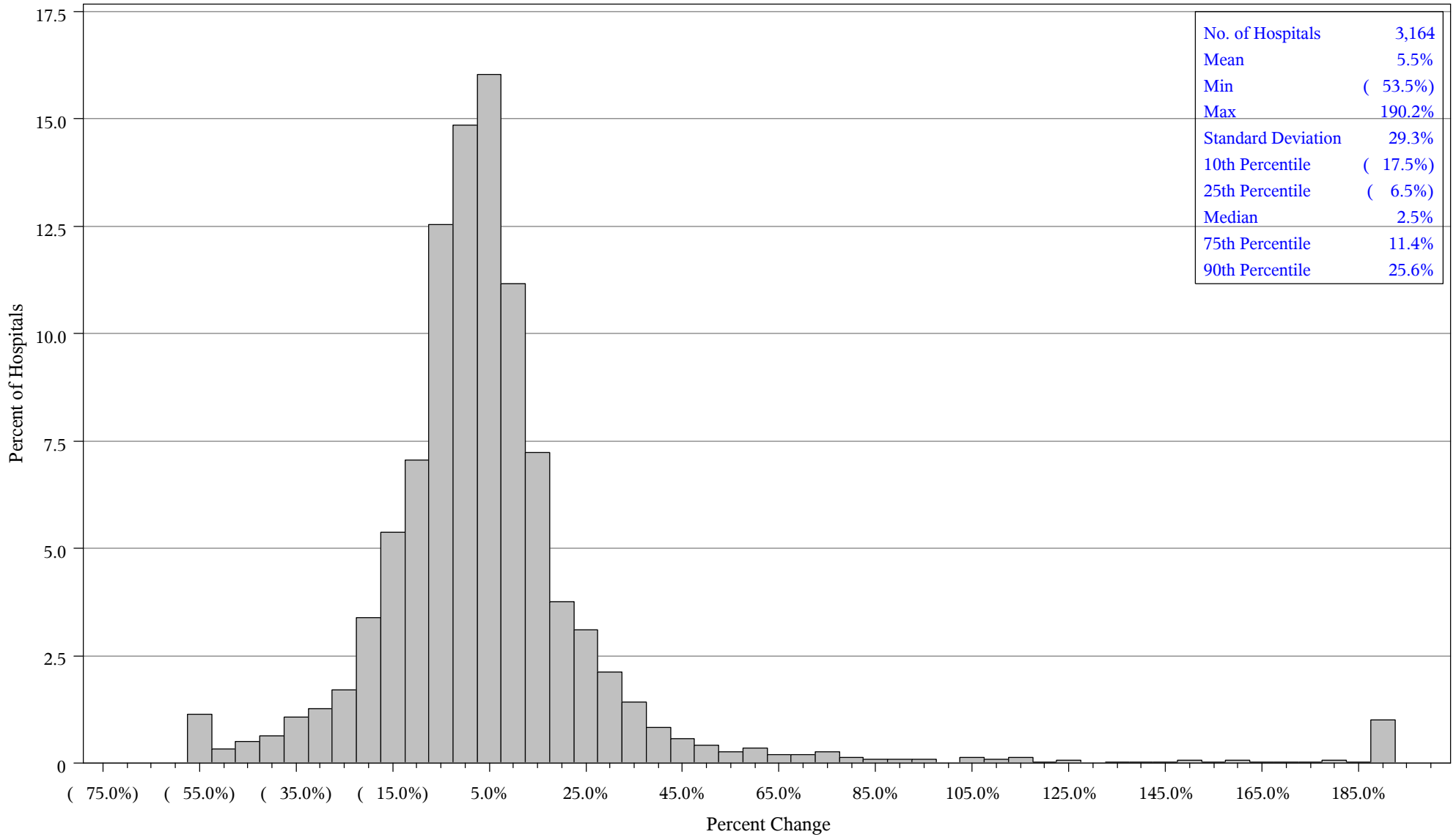
Fiscal Year 2009



- Notes:
1. Hospitals with prices above the 99th percentile are capped at the 99th percentile [\$23,789].
 2. Hospitals with prices below the 1st percentile are assigned the 1st percentile [\$1,066].

Source: Centers for Medicare & Medicaid Services, Hospital Cost Report, Fiscal Year 2009.

Histogram of Year-Over-Year Changes in STAC Hospital Prices (Inpatient Revenue per Case-Mix-Adjusted Patient Day) Fiscal Year 2008 to 2009



- Notes:
1. Hospitals with percent price changes above the 99th percentile are capped at the 99th percentile [190.2%].
 2. Hospitals with percent price changes below the 1st percentile are assigned the 1st percentile [(- 53.5%)].

Sources: Centers for Medicare & Medicaid Services, Hospital Cost Report, Fiscal Year 2009.