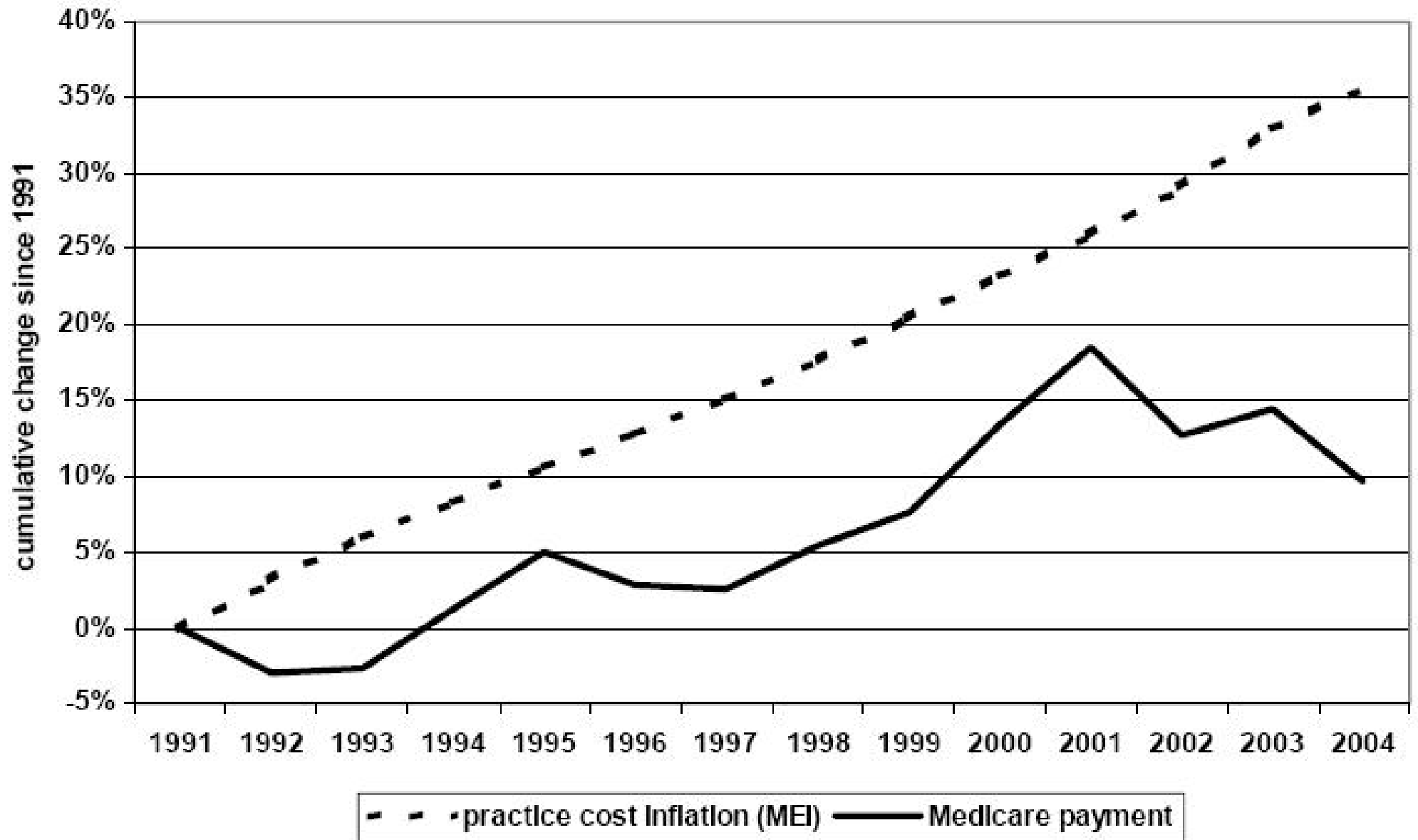


History of Medicare Conversion Factors

Year	Conversion Factor	% Change	Primary Care Conversion Factor	% Change	Surgical Conversion Factor	% Change	Other Nonsurgical Conversion Factor	% Change
1992	\$31.0010		N/A		N/A		N/A	
1993	N/A				\$31.9620		\$31.2490	
1994	N/A		\$33.7180		\$35.1580	10.0	\$32.9050	5.3
1995	N/A		\$36.3820	7.9	\$39.4470	12.2	\$34.6160	5.2
1996	N/A		\$35.4173	-2.7	\$40.7986	3.4	\$34.6293	0.0
1997	N/A		\$35.7671	1.0	\$40.9603	0.4	\$33.8454	-2.3
1998	\$36.6873		<p><i>Initially, the Medicare Physician Payment Schedule included distinct conversion factors for various categories of services. In 1998, a single conversion factor was implemented. The reduction in the 1999 conversion factor was offset by elimination of the work adjuster from the first five-year review and increases in the practice expense and PLI RVUs. The reduction in the 2009 conversion factor was offset by elimination of the work adjuster from the third Five-Year Review.</i></p>					
1999	\$34.7315	-5.3						
2000	\$36.6137	5.4						
2001	\$38.2581	4.5						
2002	\$36.1992	-5.4						
2003	\$36.7856	1.6						
2004	\$37.3374	1.5						
2005	\$37.8975	1.5						
2006	\$37.8975	0.0						
2007	\$37.8975	0.0						
2008	\$38.0870	0.5						
2009	\$36.0666	-5.3						

Medicare Payments vs. Practice Cost Inflation



Sources: Practice cost inflation all years, Centers for Medicare and Medicaid Services (CMS); 1992-97 payments, Physician Payment Review Commission; 1998-2003 payments, American Medical Association; 2004 projections, CMS.